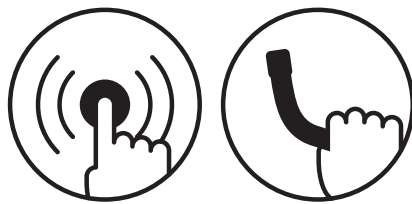




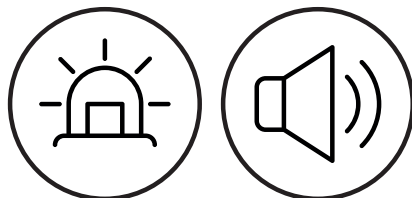
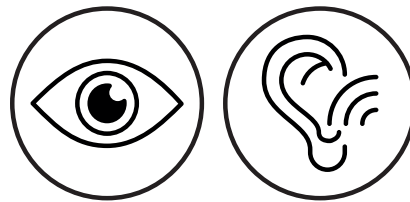
The Quattro® Motor Mover Electronics and Handset have received an upgrade. The new 'Basic' electronics system is straightforward and reliable, refining upon its predecessor for an improved user experience.

While the 'Classic' and new 'Basic' auto-engage electronics are generally very similar in operation, there are a few key areas in which benefits can be seen.



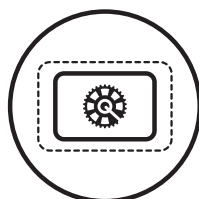
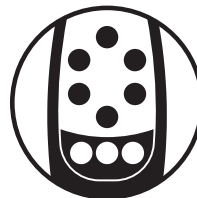
Basic Electronics are compatible with auto-engage motors as well as manual engage motors.

Visual and audible feedback of command completion, such as engaging motors.



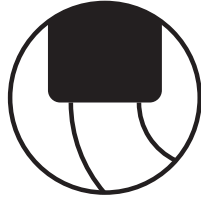
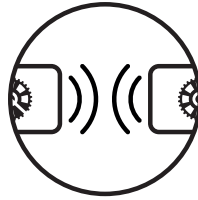
Visual and audible alarm/warning system to highlight faults and indicate incorrect AWD set up.

Mode selection now via button sequences meaning addition/removal of third battery is no longer required for varying set-ups.



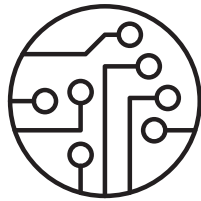
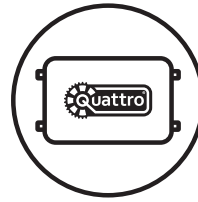
Overall size of electronics/enclosure compressed, meaning more convenient for installation.

Improved AWD control/set up where front and rear axle boxes communicate with one another as opposed to simply being paired to the same controller.



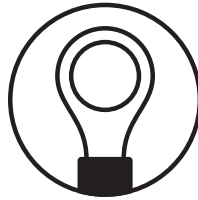
AWD performance gain with improvements to internal wheel movement when manoeuvring.

Cosmetic update bringing product on brand, sharing look and feel of smart electronics and Quattro® mover line.



Electronic PCB layout improved and made more efficient.

Ring terminals used over spade connectors for better electrical connections, greatly reducing the ability for wiring to loosen from electronics box terminals over time.



Now supplied with a 120A in-line fuse and holder as standard.

For more information and full set-up instructions for your Quattro® Motor Mover, please refer to the user manual. This can be found at www.quattromover.co.uk

Need help? Call our team on 01473 601200.