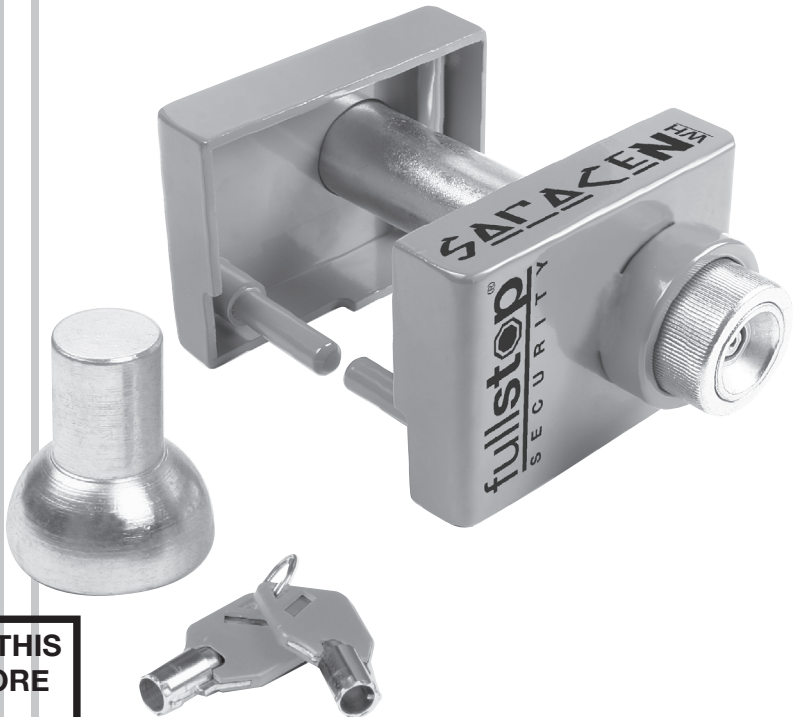


fullstop[®]
SECURITY

SARACEN

Model. FHL200

Hitch Lock



**PLEASE READ THIS
MANUAL BEFORE
FIRST USE.**

**TIME INVESTED IN
CORRECT FITMENT
IS REPAID IN THE
LEVEL OF SECURITY
THAT IS ACHIEVED.**

User Manual

Rev.A 05-10

by  **purpleline**[®]
design...innovate...improve

Parts Identification

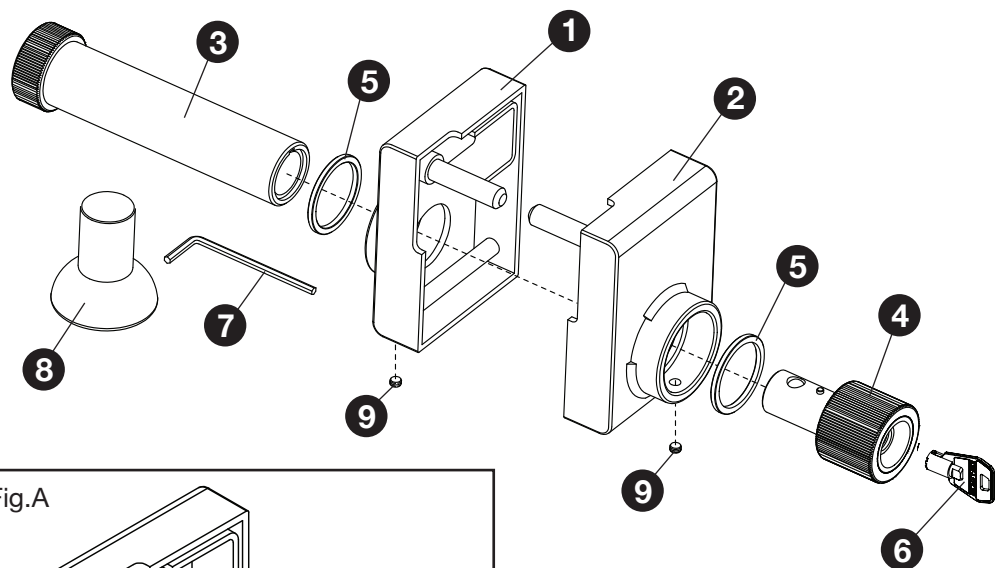
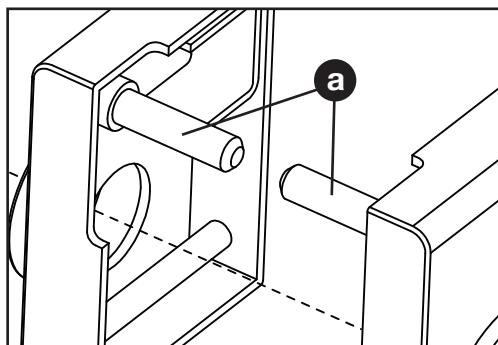
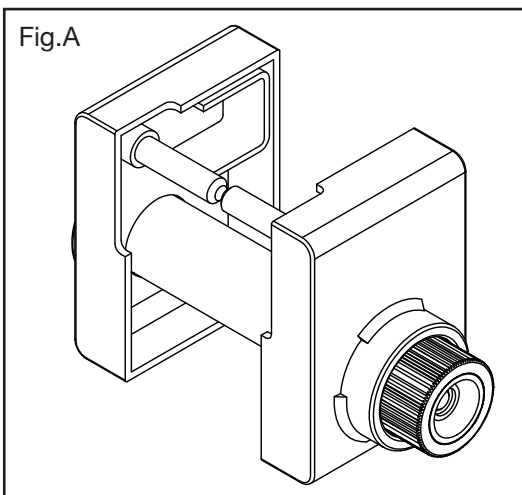


Fig.A



- | | |
|------------------------|----------------------|
| 1. Side A | 6. Key (x2) |
| 2. Side B | 7. Hex Key |
| 3. Female Lock Portion | 8. Security Tow Ball |
| 4. Male Lock Portion | 9. Hex Grub Screws |
| 5. Spacer (x2) | |

Please store your keys in a safe place and remember to return your fully completed registration card. Your key number is located on both of the keys supplied and will be required in order to purchase replacement keys.



Installation

The FullStop® Saracen Hitch Lock can be fitted when your vehicle is hitched or unhitched, but it is advisable that it is not fitted during transit.

Hitched

The Saracen hitchlock is supplied ready assembled as two parts for easy fitment.

To install, simply locate the metal pin (a) on Side A (1) into the aperture on the side of the Winterhoff WS3000 stabiliser hitch. Insert the key into the lock and rotate 90° clockwise to unlock. Then locate the pin (a) on Side B (2) into the other side of the hitch and align the end of the male lock portion (4) into the end of the Female Lock Portion (3). Once aligned you should be able to turn the key 90° anti-clockwise and remove the key. Once installed the assembled hitchlock will fit together as shown in Fig.A. Your hitchlock should now be installed.

If you cannot get the male and female lock portions to lock together it may be necessary to remove one or both of the spacers (5) to allow a larger distance between the two faces of sides A & B.

To remove a spacer use the supplied hex key (7) and undo one or both of the small hex grub screws (9); this releases the male and female lock portions to enable removal of the spacer(s).

Unhitched

Installation of the Saracen Hitch Lock when fitting onto an unhitched caravan, is identical except that the included Security Tow Ball (8) must be inserted into your coupling to inhibit the caravan to be hitched onto a vehicle.

Note

It is highly recommended that a secondary security device (such as a wheel clamp) should be used to inhibit theft by some unconventional form of towing. Visit www.purpleline.co.uk for details of other products in the Fullstop Security range

Maintenance

It is advisable to spray the outside of the lock body with a light oil such as WD-40 or equivalent every sixteen weeks.



Disclaimer

If used properly, your FullStop® product will be an effective deterrent. However, nothing can stop the efforts of the most determined thief, and to this end no liability is accepted for any loss and/or damage caused by any illegal activity including theft or vandalism. Liability also not accepted for any loss and/or damage arising from misuse, unauthorised repair or alteration and failure to follow the user guide directions. No form of consequential loss what so ever will be accepted.



© Copyright 2010. Purple Line Limited.

Web: www.purpleline.co.uk **E-mail:** admin@purpleline.co.uk **Tel:** 01473 601200

Photographs for illustration purposes only. Actual product may differ slightly.
Purple line Limited reserve the right to alter product specification without prior notice.